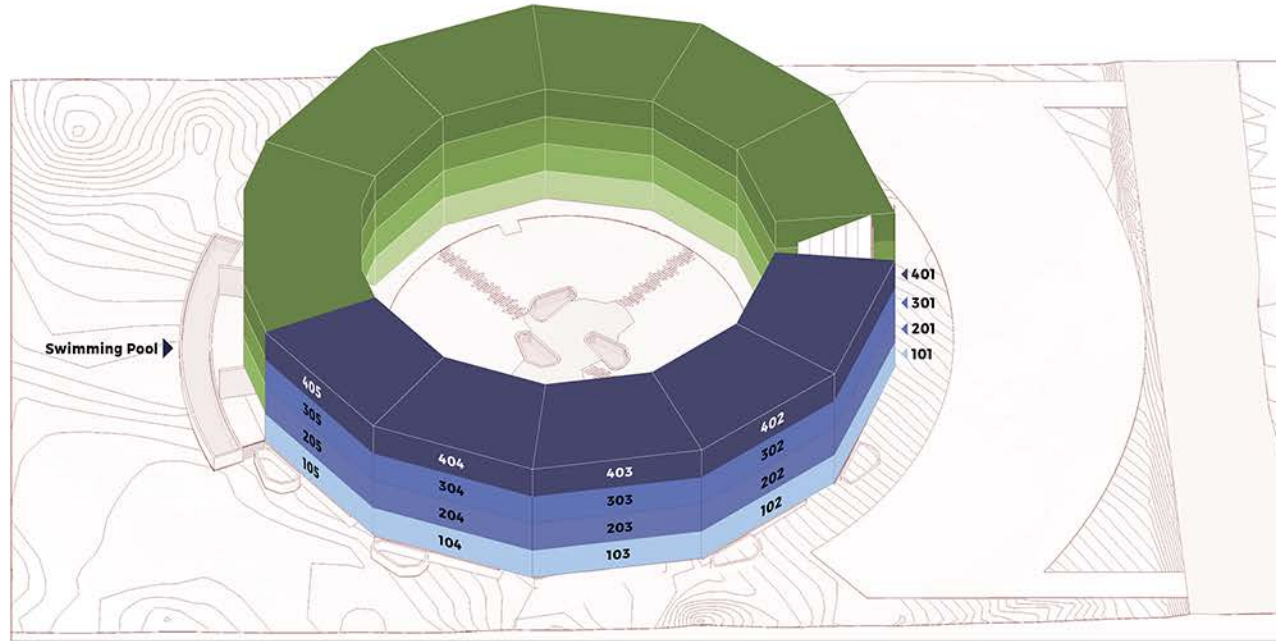


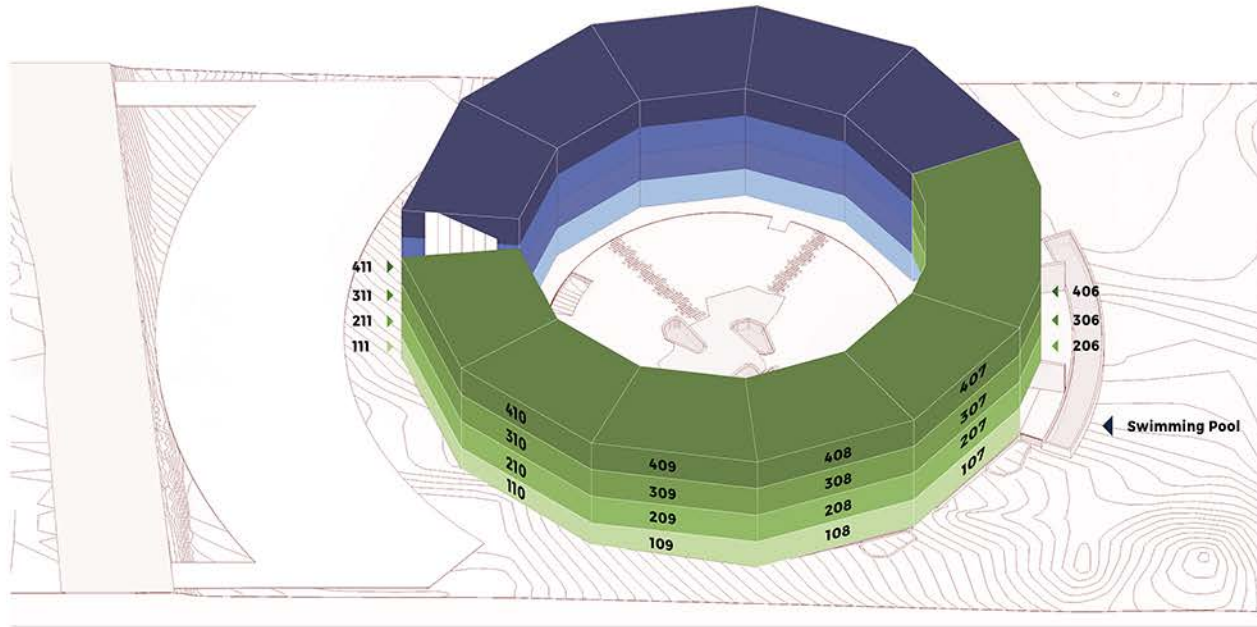
Unit Location Phase 1



- Garden Floor
- Mezzanine 1 Floor
- Mezzanine 2 Floor
- Penthouse Floor with Private Rooftop



Unit Location Phase 2



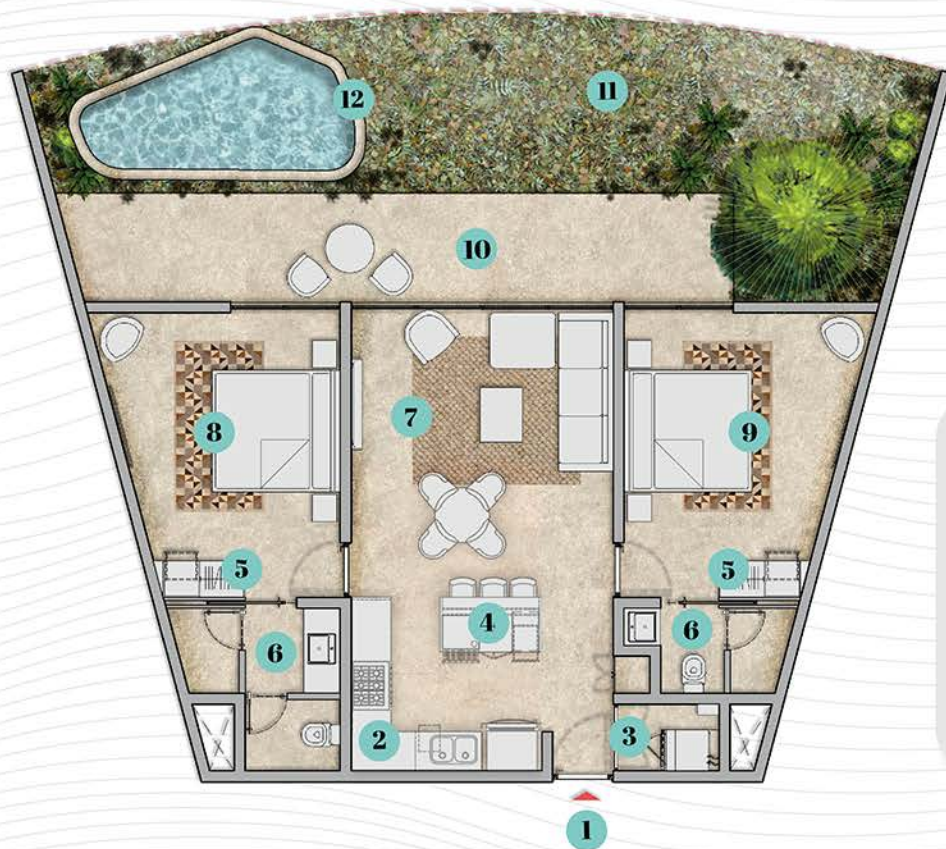
- Garden Floor
- Mezzanine 1 Floor
- Mezzanine 2 Floor
- Penthouse Floor with Private Rooftop



Garden Master Floor Plan



Garden Floor Plan



2 BEDROOMS



2 BATHROOMS

INTERIOR

84 m²
909 ft²

TERRACE

20 m²
214 ft²

GARDEN

44 m²
474 ft²

TOTAL

148 m²
1,596 ft²

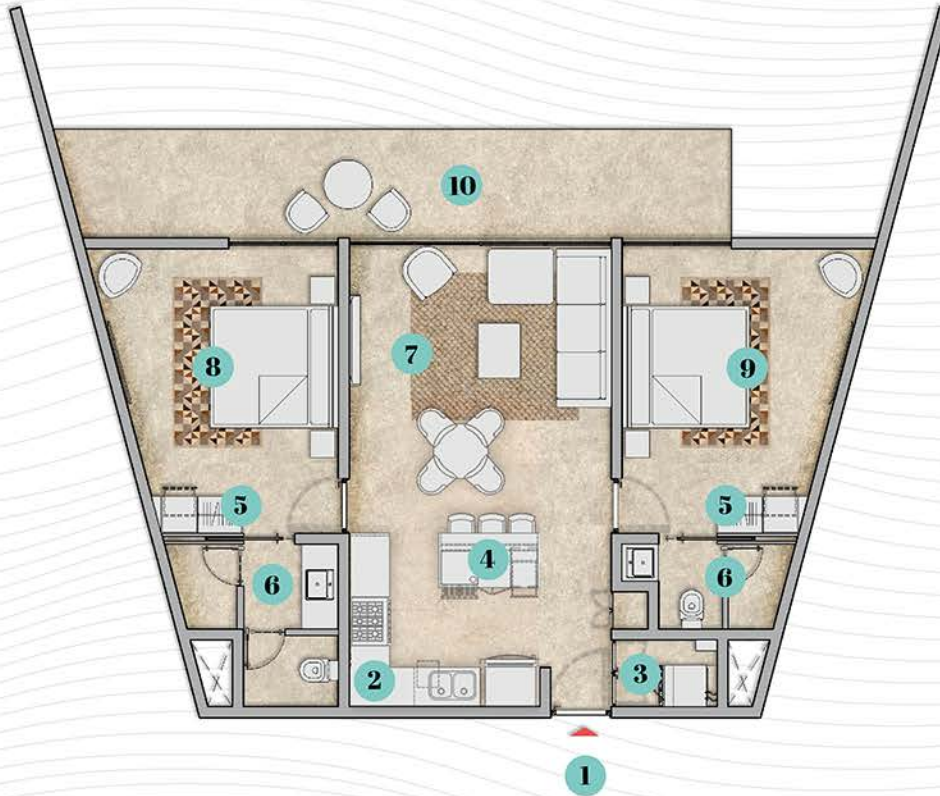
- | | |
|--------------------------|----------------------------|
| 1 Entry | 7 Living room |
| 2 Kitchen | 8 Master bedroom |
| 3 Laundry room | 9 Secondary bedroom |
| 4 Kitchen Island* | 10 Terrace |
| 5 Closets | 11 Garden |
| 6 Bathrooms | 12 Pool* |

**Kitchen island and pool are an upgrade.
Unit 103 & 109 cannot have an upgrade pool due to project restrictions.

Mezzanine 1 Master Floor Plan



Mezzanine 1 Floor Plan



2 BEDROOMS



2 BATHROOMS

INTERIOR

84 m²
909 ft²

TERRACE

20 m²
214 ft²

TOTAL

104 m²
1,123 ft²

- | | |
|--------------------------|----------------------------|
| 1 Entry | 7 Living room |
| 2 Kitchen | 8 Master bedroom |
| 3 Laundry room | 9 Secondary bedroom |
| 4 Kitchen Island* | 10 Terrace |
| 5 Closets | |
| 6 Bathrooms | |

**Kitchen island is an upgrade.*

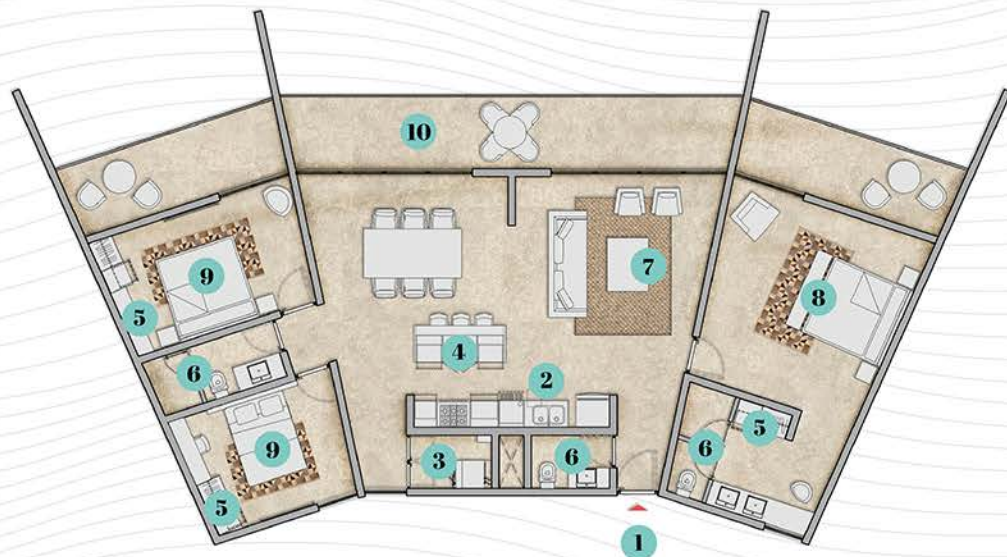
Mezzanine 1 Floor Plan - 3 Bedrooms



3 BEDROOMS



2.5 BATHROOMS



INTERIOR
141 m²
1,522 ft²

TERRACE
40 m²
430 ft²

TOTAL
181 m²
1,948 ft²

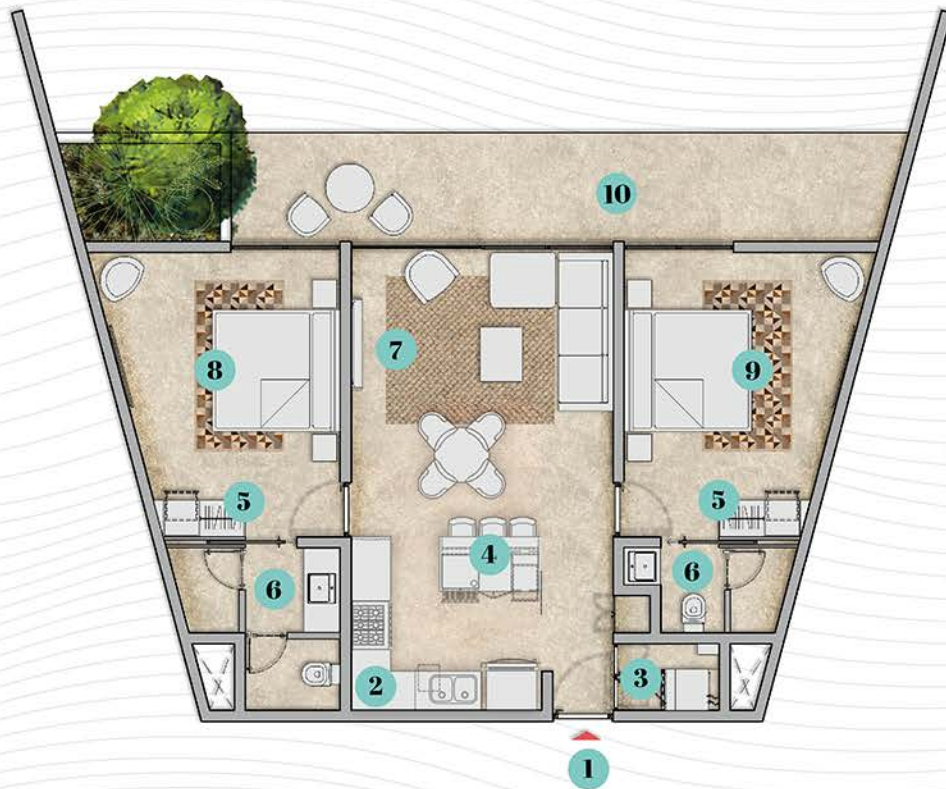
- | | |
|--------------------------|----------------------------|
| 1 Entry | 7 Living room |
| 2 Kitchen | 8 Master bedroom |
| 3 Laundry room | 9 Secondary bedroom |
| 4 Kitchen Island* | 10 Terrace |
| 5 Closets | |
| 6 Bathrooms | |

**Kitchen island is an upgrade.*

Mezzanine 2 Master Floor Plan



Mezzanine 2 Floor Plan



2 BEDROOMS



2 BATHROOMS

INTERIOR

84 m²
909 ft²

TERRACE

20 m²
214 ft²

TOTAL

104 m²
1,123 ft²

- | | |
|--------------------------|----------------------------|
| 1 Entry | 7 Living room |
| 2 Kitchen | 8 Master bedroom |
| 3 Laundry room | 9 Secondary bedroom |
| 4 Kitchen Island* | 10 Terrace |
| 5 Closets | |
| 6 Bathrooms | |

**Kitchen island is an upgrade.*

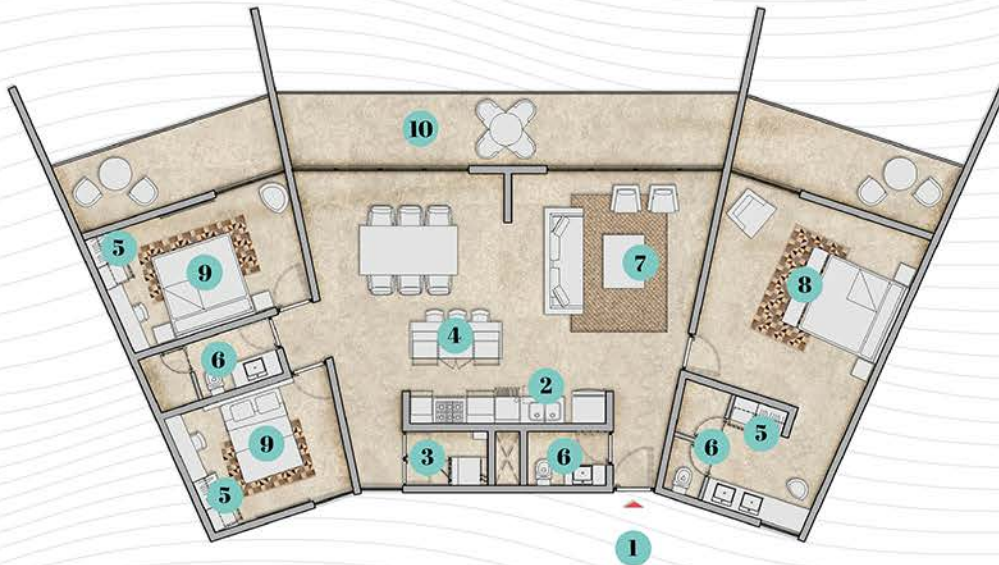
Mezzanine 2 Floor Plan - 3 Bedrooms



3 BEDROOMS



2.5 BATHROOMS



INTERIOR
141 m²
1,522 ft²

TERRACE
40 m²
430 ft²

TOTAL
181 m²
1,948 ft²

- | | |
|--------------------------|----------------------------|
| 1 Entry | 7 Living room |
| 2 Kitchen | 8 Master bedroom |
| 3 Laundry room | 9 Secondary bedroom |
| 4 Kitchen Island* | 10 Terrace |
| 5 Closets | |
| 6 Bathrooms | |

**Kitchen island is an upgrade.*

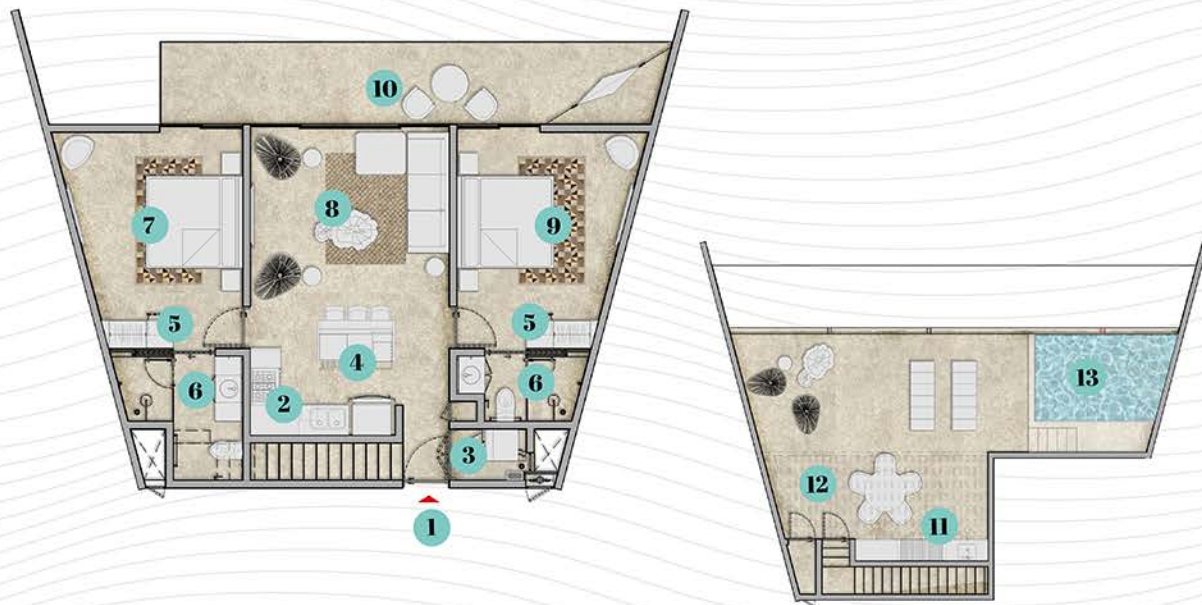
Penthouse Master Floor Plan



Rooftop Master Floor Plan



Penthouse Floor Plan



2 BEDROOMS



2 BATHROOMS

- 1** Entry
- 2** Kitchen
- 3** Laundry room
- 4** Kitchen Island*
- 5** Closets
- 6** Bathrooms
- 7** Master bedroom
- 8** Living room
- 9** Secondary bedroom
- 10** Terrace
- 11** Bar*
- 12** Pergola*
- 13** Pool*

**Kitchen Island, Pool, Pergola and Bar are an upgrade.*

INTERIOR

84 m²
909 ft²

TERRACE

20 m²
214 ft²

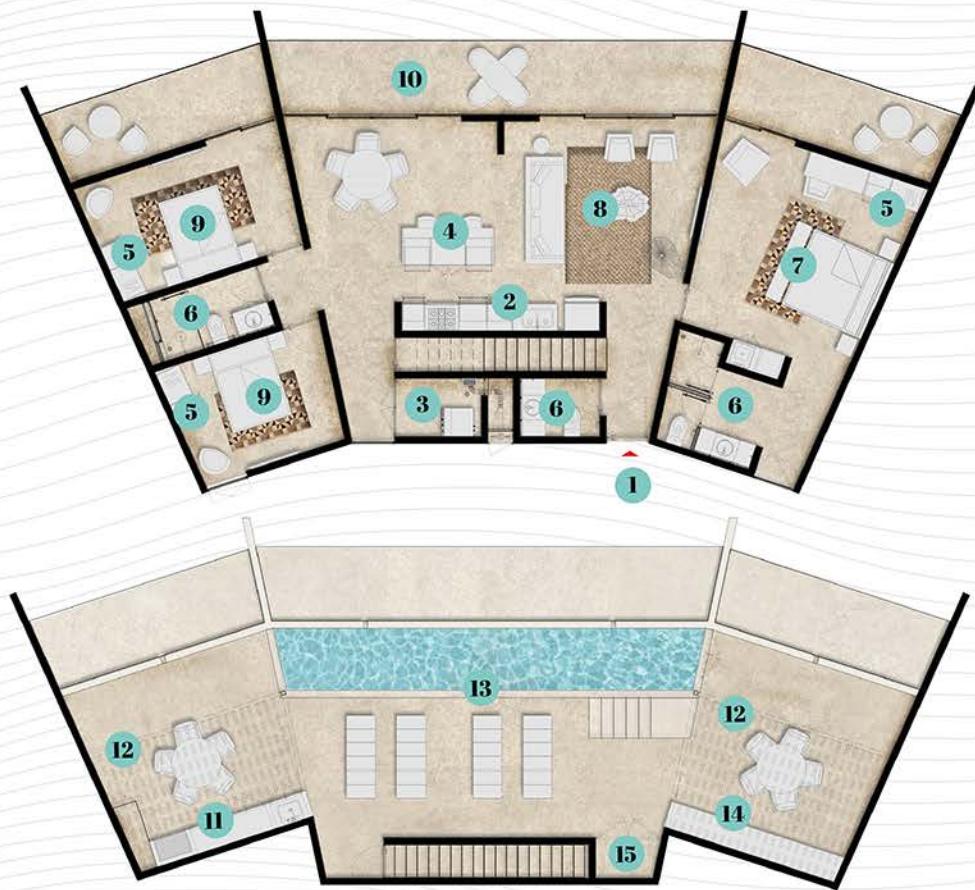
ROOFTOP

68 m²
733 ft²

TOTAL

172 m²
1,856 ft²

Penthouse Floor Plan - 3 Bedrooms



3 BEDROOMS



2.5 BATHROOMS

- | | |
|--------------------------|----------------------------|
| 1 Entry | 9 Secondary bedroom |
| 2 Kitchen | 10 Terrace |
| 3 Laundry room | 11 Bar* |
| 4 Kitchen Island* | 12 Pergola* |
| 5 Closets | 13 Pool* |
| 6 Bathrooms | 14 Concrete Bench* |
| 7 Master bedroom | 15 Storage Room* |
| 8 Living room | |

**Kitchen Island, Pool, Pergola, Bar, Concrete Bench and Storage Room are an upgrade.*

INTERIOR

142 m²
1,522 ft²

TERRACE

40 m²
430 ft²

ROOFTOP

112 m²
1,215 ft²

TOTAL

294 m²
3,170 ft²